

# Police Qualification Range

Ad Hoc Police Range Committee

# Contents

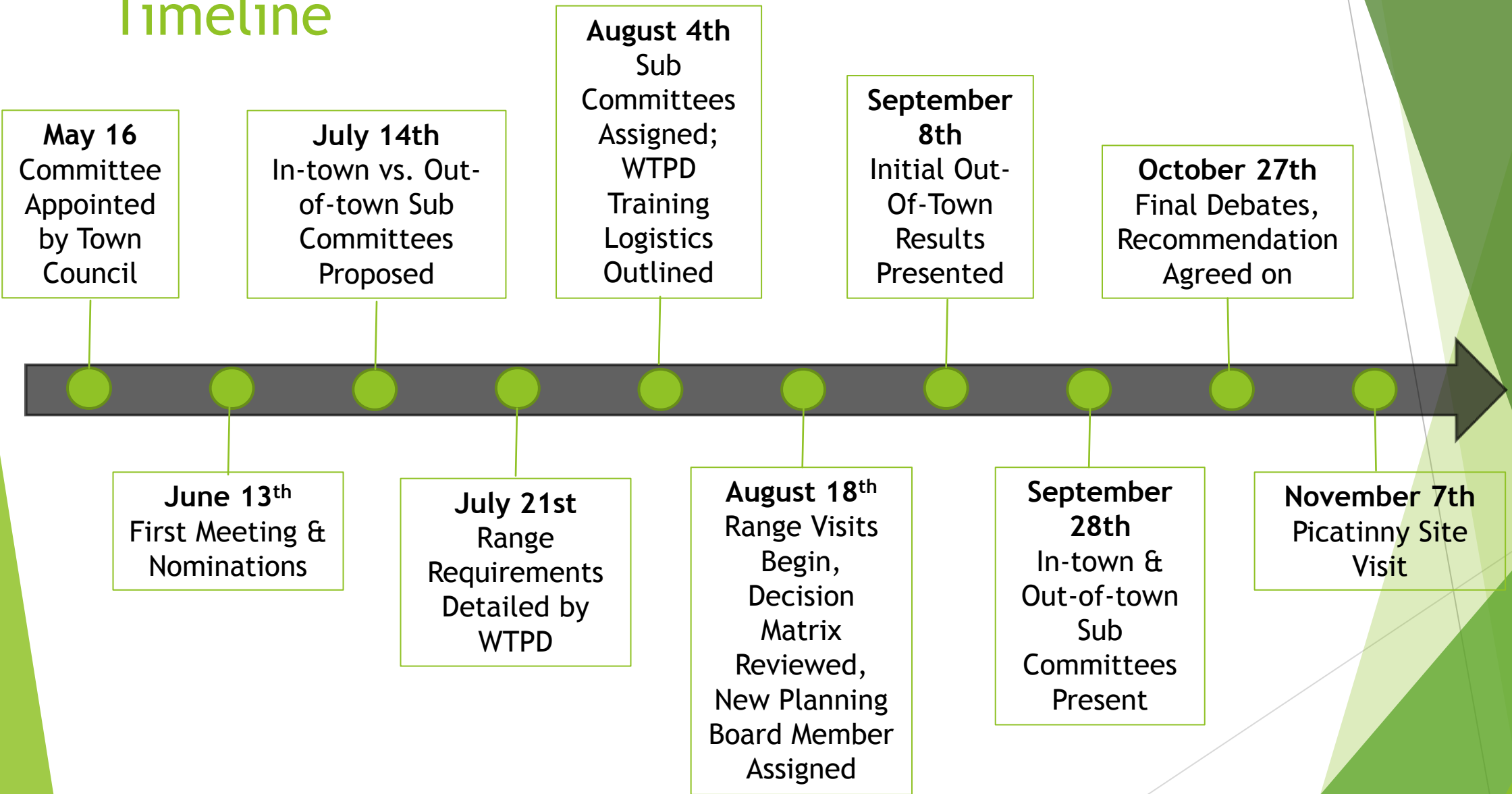
- ▶ Introduction & Background
- ▶ Timeline
- ▶ Police Qualification Needs
- ▶ Methodology
- ▶ Out-Of-Town Options
- ▶ In-Town Options
- ▶ Summary
- ▶ Committee Final Recommendation

# Background

- ▶ Established May 16, 2016 by Washington Township (#R-102-16)
- ▶ Members appointed May 16, 2016 by Washington Township (#R-89-16)
- ▶ Experienced & Diverse Committee
  - ▶ Police, Town Council & Planning Board Representatives
  - ▶ Committee Experience Includes:
    - ▶ Retired Police Officer
    - ▶ Firing Range Expert
    - ▶ Experienced Shooters
    - ▶ Geographically-dispersed Township Residents
- ▶ Chair: James Frankovic
- ▶ Vice Chair: Zachary Haas
- ▶ Secretary: Thomas McBride
- ▶ Advisory Members: Scott Myers (WT Police Dept.), Donald Babb (WT Council), Bill Leavens (Planning Board)\*
- ▶ Members: Michael Marino, Thomas Koundry, Michael Carkitto, Robert Wilson

*\*Original Planning Board Member, Howard Popper, Resigned*

# Timeline



# Police Qualification Needs

## Summary:

- Minimum of 8 Range Days (2 Squads; 4 x Per Squad)
- Minimum of 50 Yards for Rifle Qualification (w/ diminished targets)
  - Minimum of 25 Yards for Pistol Qualification
  - Minimum of 25 Yards for Shotgun Qualification

### Rifle Qualification

- 4 Qualifications
- 220 Rounds Total (2 x 100, 2 x 10)
- 100, 75, 50, 25, 15, 7, 5 Yard Increments
  - 100 & 75 can be done at 50 Yards
- Minimum score of 80%
- Competencies Assessed:
  - Safe Weapon Handling
  - Loading & Unloading
  - Proper Physical Stance (kneeling, barricade, crouched, standing)
  - Marksmanship

### Pistol Qualification

- 2 Qualifications
- 200 Rounds Total (100 rounds per qualification)
- 25, 15, 10, 7, 5, 1 Yard Increments
- Minimum score of 80%
- Competencies Assessed:
  - Safe Weapon Handling
  - Loading & Unloading
  - Proper Physical Stance (kneeling, barricade, crouched, standing)
  - Marksmanship

### Shotgun Qualification

- 2 Qualifications
- 40 Rounds Total (2 x 20)
- Qualifications include night and day course for slug & non slug ammunition
- 25, 20 Yard Increments
- Minimum score of 80%
- Competencies Assessed:
  - Safe Weapon Handling
  - Loading & Unloading
  - Shouldering the weapon
  - Ammunition Identification

# Methodology

- ▶ Holistic & Unbiased Approach Incorporating Public Feedback & Police Needs
- ▶ Scored Using Weighted Matrix
  - ▶ Ability to Qualify: Handgun, Pistol, Shotgun
  - ▶ Additional Training Ability
  - ▶ Range Capacity
  - ▶ Safety: Backdrop/Berm, Downrange, Elevation, Soil, Proximity, Traffic, Public Transportation, Restricted Access
  - ▶ Accessibility: By Vehicle/foot, Right of Way, Inclement Weather
  - ▶ Range size
  - ▶ Site Topography
  - ▶ Environmental: Water Sources, Lead Migration, Wildlife, Public Use, Noise
  - ▶ Ease of Scheduling
  - ▶ Cost: Ownership, Approvals, Land Clearing, Construction
  - ▶ Aesthetics
  - ▶ Land Use
  - ▶ Distance from WTPD Headquarters

Date last saved: Aug-18-201

### Washington Township Police Department Firearms Range

| Decision Factors       |     | Option 1 | Option 2 | Option 3 | Option 4 | Option 5 |
|------------------------|-----|----------|----------|----------|----------|----------|
| Criteria               | Wt. | 1        | 2        | 3        | 4        | 5        |
| Handgun Qualification  | 0.0 | 0        | 0        | 0        | 0        | 0        |
| Shotgun Qualification  | 0.0 | 0        | 0        | 0        | 0        | 0        |
| Rifle Qualification    | 0.0 | 0        | 0        | 0        | 0        | 0        |
| Additional training    |     |          |          |          |          |          |
| Capacity               | 0.0 | 0        | 0        | 0        | 0        | 0        |
| Safety - Backdrop/Berm | 0.0 | 0        | 0        | 0        | 0        | 0        |

**Washington Township Police Weapons Qualification and Training Range**  
 The Washington Township Police force has the desire to better train officers in different tactics and in different scenarios, which you cannot do in an enclosed port weapons range at the academy. Currently, Scheduling is an issue, since we are competing with many other agencies for a limited number of spaces. It is evident that simply qualifying twice per year, standing in a ported port does little but teach an officer how to target shoot.

The goal of the proposal is to allow us to train on our terms, in our manner, by our instructors, in areas which we know will best benefit our department. We will no longer be restricted by outside influences and can literally give our officers the best training possible so that they can be prepared for whatever comes their way.

| Criteria               | Definition  |
|------------------------|---|
| Handgun Qualification  | Ability to perform weapons qualification in accordance with the Semi-Annual Firearms Qualification and ReQualification Standards issued by the NJ DCL<br>- Semi Annual Qualification<br>- 100 rounds each qualification (60 daylight, 40 simulated low light)<br>- Distance of 25 yds is required                             |
| Shotgun Qualification  | Ability to perform weapons qualification in accordance with the Semi-Annual Firearms Qualification and ReQualification Standards issued by the NJ DCL<br>- Semi Annual Qualification<br>- 20 rounds each qualification<br>- Distance of 25 yds required   |
| Rifle Qualification    | Ability to perform weapons qualification in accordance with the Semi-Annual Firearms Qualification and ReQualification Standards issued by the NJ DCL<br>- Semi Annual Qualification<br>- 100 rounds each qualification<br>- Minimum distance of 50 yards (100 yds desired)<br>- 2 additional qualification of 10 rounds each |
| Additional training    | It is desired the site lend itself to perform additional types of firearms training including:<br>- Target Approach using verbal commands<br>- Exiting a vehicle<br>- Dry drills<br>- Reloading drills<br>- Malfunction drills<br>- Weapon Exchange (moving from rifle to handgun)  |
| Capacity               | The range must allow 20 officers to complete their handgun, shotgun, and Rifle qualification within 4 hour timeframe  |
| Safety - Backdrop/Berm | The location is better if it has naturally occurring backdrop or berm, or man-made berm (fence and/or) to be used to back up the  |

# Ranges Evaluated

## Out Of Town

- ▶ Black River (Chester)\*
- ▶ Ghost Lake (Allamuchy)\*
- ▶ RTSP (Randolph)\*
- ▶ Shongum (Mansfield)\*
- ▶ Picatinny Arsenal (Rockaway)\*
- ▶ Cherry Ridge (Highland Lakes)
- ▶ Tactical Training Center (Flemington)
- ▶ Heritage Guild (Easton, PA)

## In Town

- ▶ Reservoir Road\*
- ▶ Califon Road\*
- ▶ Fishers Mine\*

*\*Site visits made*

# Out of Town Recommendation

Based on the available sites outside of Long Valley, accessibility, scheduling and the ability to qualify, the out of town committee recommends the Ghost Lake Range in Allamuchy.

## Pros:

- ▶ Meets all Necessary Requirements for Qualification
- ▶ Range Currently Used by WTPD
- ▶ Ability to Fire at up to 100 Yards
- ▶ Natural surroundings dampen noise
- ▶ Additional Amenities Available (Range Master Tower, Storage, Sound & Lighting Systems)

## Cons:

- ▶ Other Agencies Have Priority (Park Police, Warren County Agencies) & Scheduling Issues may Persist
- ▶ Limited Travel Required (Closer than Morris County Police Academy Range)
- ▶ Not Available During Inclement Weather & Summer Months (Except in Extenuating Circumstances)



# Ghost Lake Range



Panoramic



View of range (back to shooting line)

# Ghost Lake Range



View of range (side & back berm)



100 Yard Capability

# Ghost Lake Range



# Additional Out of Town Sites

## **Black River Range**

### **Pros:**

- ▶ Local - located in Chester
- ▶ Range Currently Used by WTPD
- ▶ 50 Yard Range with ~13 Ports

### **Cons:**

- ▶ Potential Scheduling Issues

## **Shongum Range**

### **Pros:**

- ▶ Local - located in Mansfield (Warren County)
- ▶ 100 Yard Rifle Range with 20 Ports
- ▶ Handgun range with 15 ports
- ▶ Shotgun range available

### **Cons:**

- ▶ Private facility, membership required
- ▶ Club management may not have room for WTPD

# Additional Out of Town Sites

## Picatinny Arsenal

### Pros:

- ▶ Local - located in Rockaway
- ▶ Many Federal, State and Local Law Enforcement agencies currently use these facilities

### Cons:

- ▶ G-2 firing range is 25-yard in length and cost \$2M to construct
  - ▶ US Army rifle qualification with reduced target size
  - ▶ NJ State requires 50-yard

# Additional Out of Town Sites

## Cherry Ridge Range

### Pros:

- ▶ Handgun Range - up to 50 yards with 47 firing ports
- ▶ Rifle Ranges from 50 - 300 yards with up to 70 firing ports
- ▶ Shotgun range
- ▶ Sound, Light and Electrical Systems
- ▶ Clubhouse available

### Cons:

- ▶ 1 hour drive from WTPD (without traffic)
- ▶ Private facility, Membership required
- ▶ Club management may not have room for WTPD

# Additional Out of Town Sites

## **RTSP**

### **Pros:**

- ▶ State-Of-the-Art Indoor Range
- ▶ Additional training programs available

### **Cons:**

- ▶ Private facility, membership required
- ▶ Not adequate for rifle qualification (25 yards max)

## **Tactical Training Center (Flemington)**

### **Pros:**

- ▶ State-Of-the-Art Indoor Range
- ▶ Additional training programs available

### **Cons:**

- ▶ Private facility, membership required
- ▶ Not adequate for rifle qualification (40 yards max)

# Black River Range





# Shongum Range



# Shongum - Pistol & Trap



# Shongum: Indoor Range - 10 Lanes



# Picatinny: G2 Range



# Picatinny: G2 Range



# In Town Recommendation

Based on the available sites in town, the topography of the land, accessibility, and the ability to actually build on the site, the in town committee recommends the Reservoir Road site.

## Pros:

- ▶ Almost 400' of elevation behind the downrange berm location
- ▶ Natural surroundings dampen noise
- ▶ Fewer homes within ½ mile radius, and most of them would be opposite the direction of the range

## Cons:

- ▶ Range would be within feet of Reservoir road (direction of fire would be away from road)
- ▶ Proximity to Route 46
- ▶ Would only support a 50 yard range, sufficient for qualifying but not ideal
- ▶ Improvements to Site Required - Tree Removal, Grading, Etc.
- ▶ Significant issues with Highlands development & land use restrictions
- ▶ Cost
- ▶ Strong Community Objections

# Reservoir Road

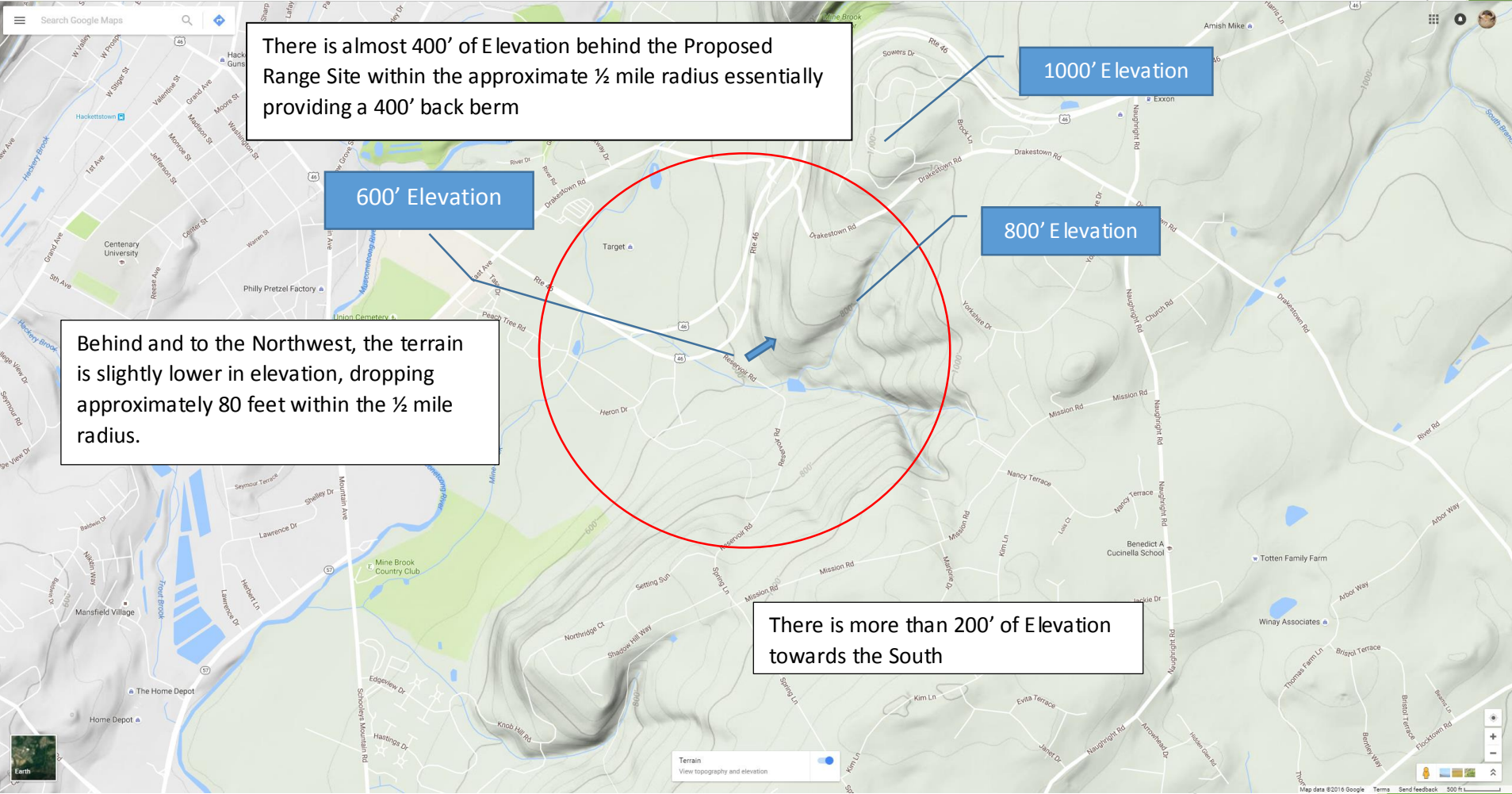


# Reservoir Road





# Reservoir Road Topography



# Additional In Town Sites

## **Fisher Mine Road - 75.62 acres**

- ▶ Completely Land Locked, would need private property owner's permission to access site
- ▶ Located on the top of a hill vs the low point of topography
- ▶ Did not rate because of these issues

## **Califon Road - 93.5 acres**

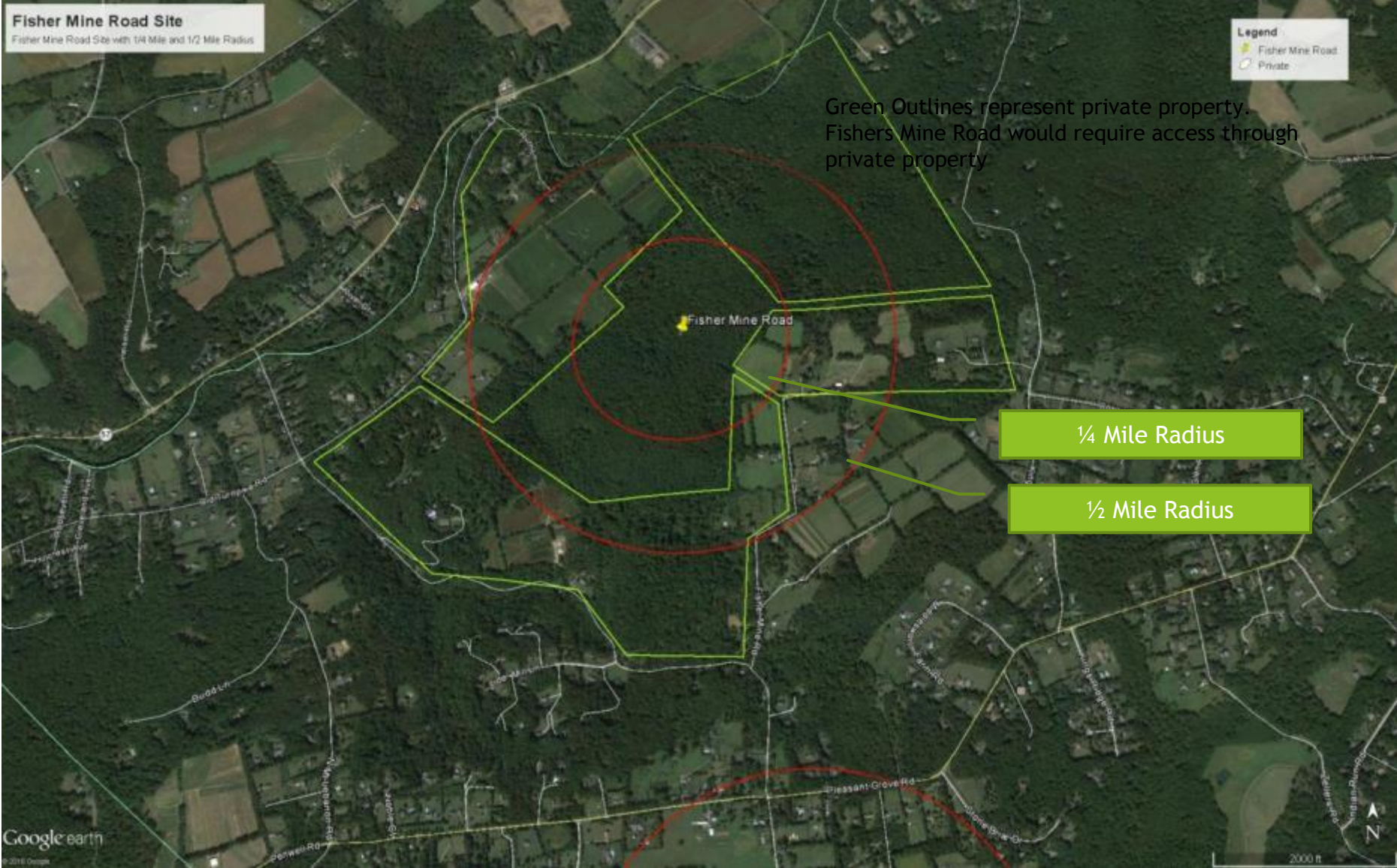
### **Pros:**

- ▶ Easy Access from road
- ▶ Range could be placed farther away from the road towards the middle of the property
- ▶ Only location the 100 yard range could be built

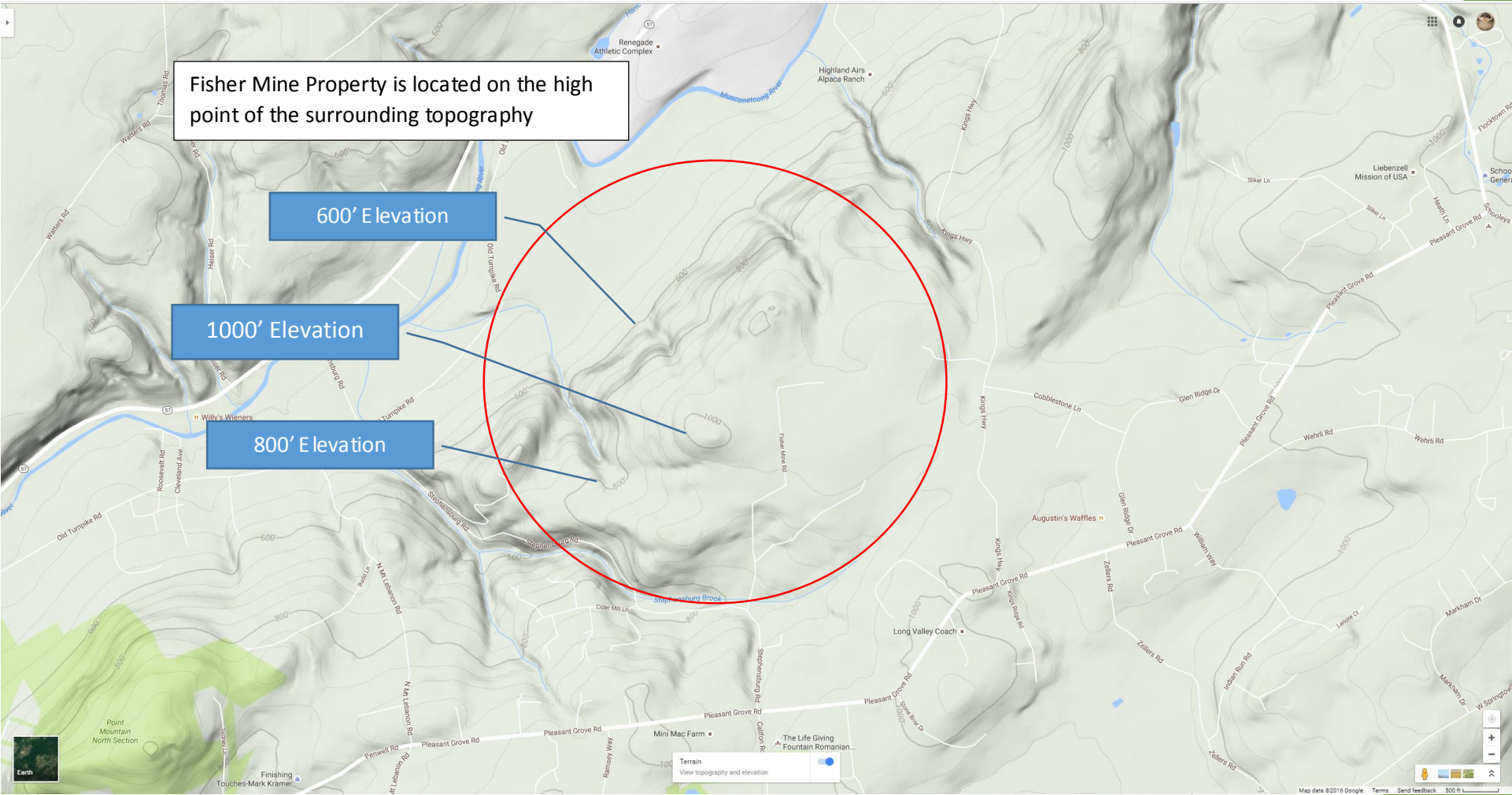
### **Cons:**

- ▶ Relatively flat topography
- ▶ Nearest Inhabited property approximately 300' from site
- ▶ Califon Fields directly across the street from the site
- ▶ Centenary Equestrian Center ½ mile away
- ▶ Purchased using Washington Township Green Acres Funds (eliminating the site as a possible range site by law)

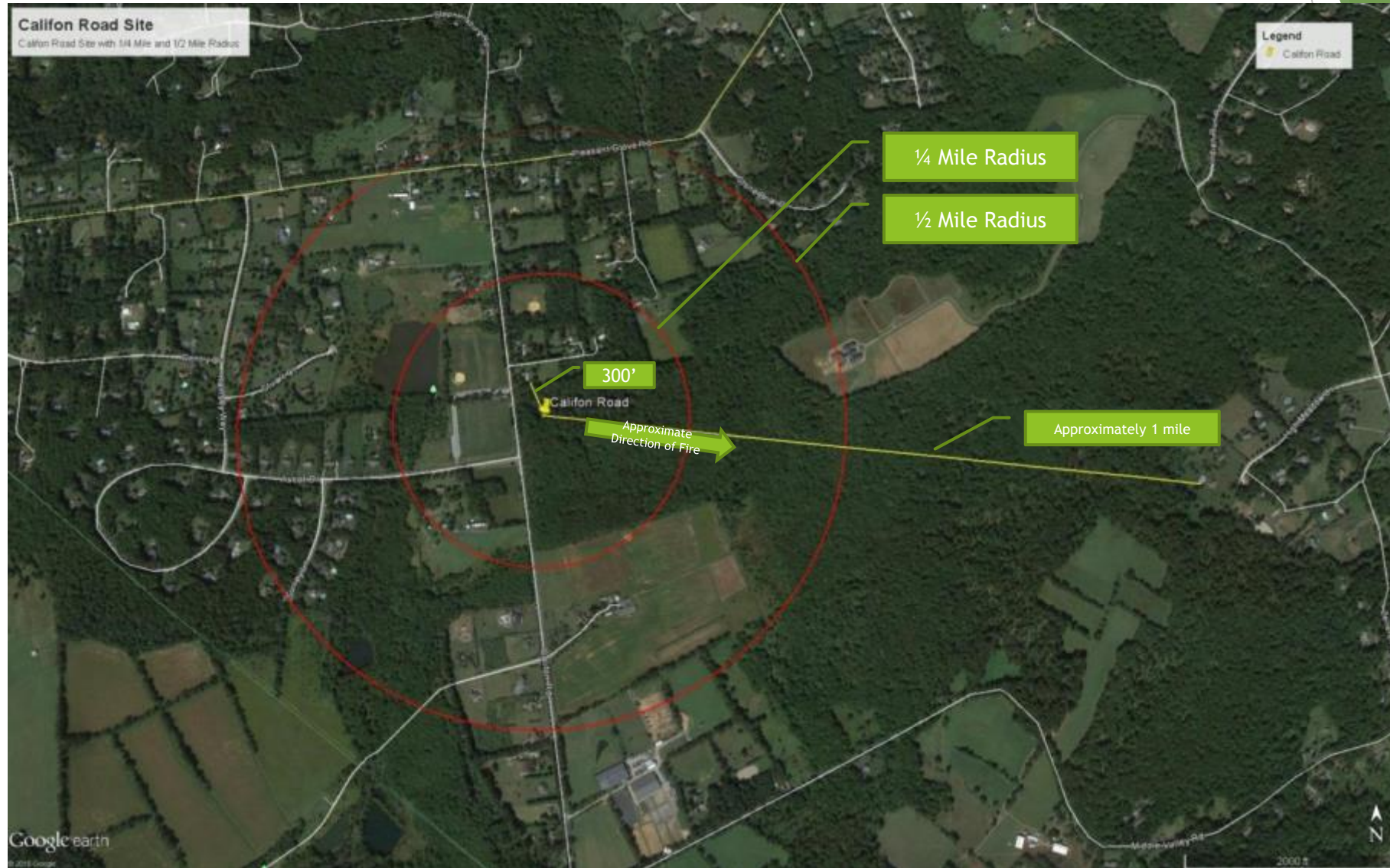
# Fisher Mine Road



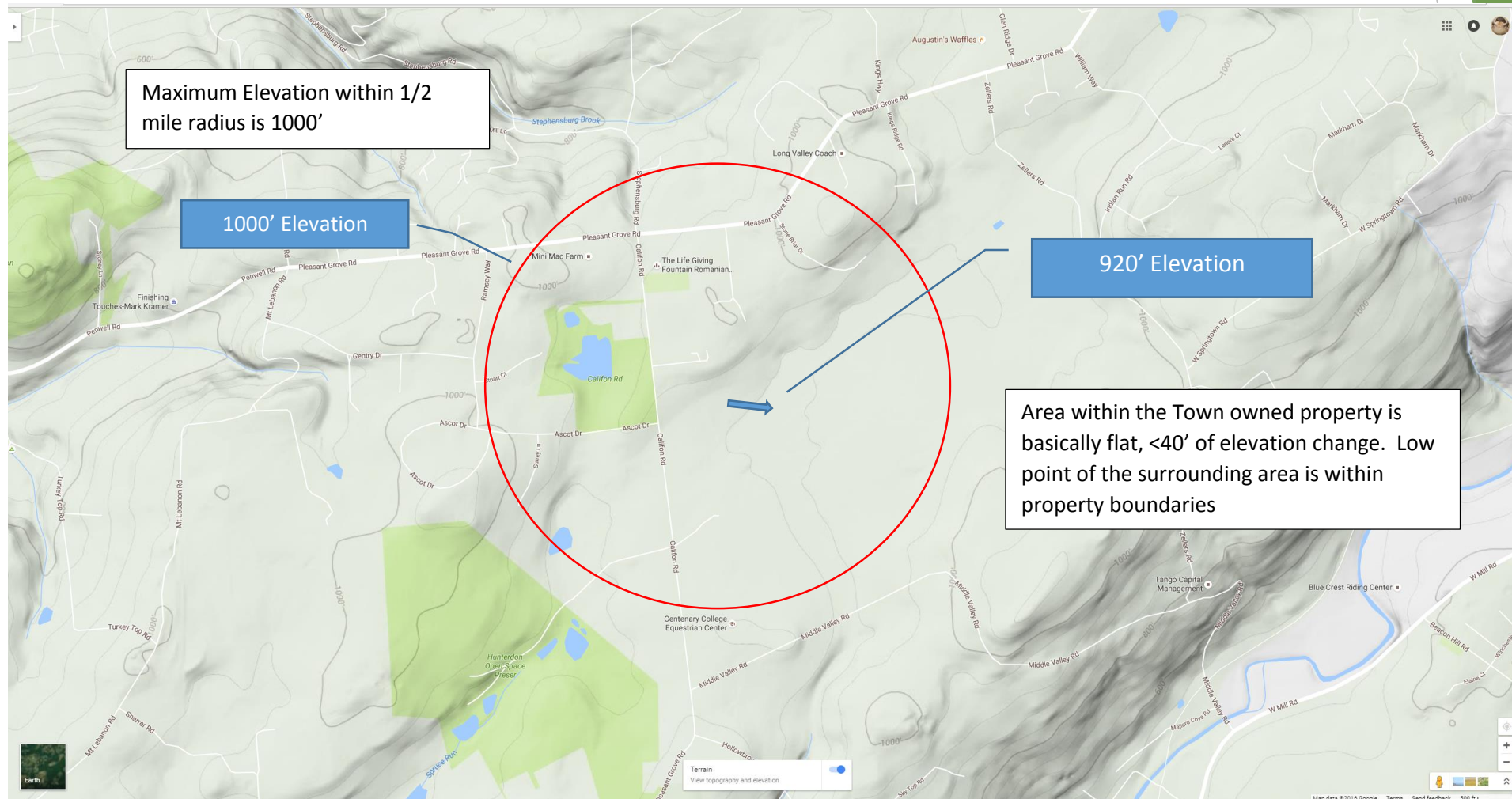
# Fisher Mine Road Topography



# Califon Road



# Califon Road Topography



# Summary

|             | 1. Maintain Status Quo & Seek Proper In-Town Site   |  | 2. Out-of-Town Option  | 3. In-Town Option   |
|-------------|---|--|--|---|
|             | Status Quo  | Proper In-Town Site  |  |   |
| Site        | Use Existing Ranges while Pursuing Proper In-Town Solution  | Proper In-Town Site or Shared Service  | Ghost Lake   | Reservoir Road  |
| Description | Utilize available county & state range facilities at Ghost Lake Black River & Morris County Police Academy (Morristown). Find a proper range site and build a state of the art facility                                       | Work with Community, County or State Government to Create a State-Of-The-Art Range for WTPD and Other Agency Use.  | Use existing Ghost Lake Range operated by NJ State Park Police in Allamuchy. Ghost Lake is an excellent outdoor range which meets all requirements for WTPD qualifications.  | Build an In-Town Range for WTPD Use on Reservoir Road. This Site Was Originally Propose by WTPD and Was Found to be The Most Suitable of the Three In-Town Options  |
| Pros        | <ul style="list-style-type: none"> <li>❖ Current System Utilized by WTDP</li> <li>❖ No Additional Expense to WT</li> <li>❖ No Disturbance to WT Community</li> </ul>  | <ul style="list-style-type: none"> <li>❖ Long-Term Solution to Recurring Problem</li> <li>❖ State-Of-The-Art Facility Providing the Best Training</li> <li>❖ Maximum Flexibility</li> </ul>                                | <ul style="list-style-type: none"> <li>❖ Meets all Necessary Requirements for Qualification</li> <li>❖ Range Currently Used by WTPD</li> <li>❖ Ability to Use up to 100 Yards</li> <li>❖ Additional Amenities Available</li> </ul> | <ul style="list-style-type: none"> <li>❖ No Travel Required</li> <li>❖ No Scheduling Difficulties</li> <li>❖ WT Owned/Controlled</li> <li>❖ Materials &amp; Labor Available via Donation</li> <li>❖ Maximum Flexibility</li> </ul>            |
| Cons        | <ul style="list-style-type: none"> <li>❖ Current Scheduling &amp; Logistical Issues Not Resolved</li> <li>❖ Requires Flexibility of Schedule in an already Tight Scheduling Environment</li> <li>❖ Travel Required</li> </ul> | <ul style="list-style-type: none"> <li>❖ Cost</li> <li>❖ Inter-Departmental Arrangements Required</li> <li>❖ Time to Build</li> <li>❖ Ongoing Maintenance &amp; Operations</li> <li>❖ May Represent a Liability</li> </ul> | <ul style="list-style-type: none"> <li>❖ Other Agencies Have Priority &amp; Scheduling Issues Persist</li> <li>❖ Travel Required</li> <li>❖ Not Available During Inclement Weather</li> </ul>                                      | <ul style="list-style-type: none"> <li>❖ Plot Not Large Enough to Support Ideal Range</li> <li>❖ Permitting, Land Use &amp; Environmental Hurdles</li> <li>❖ Disruption to WT Community</li> <li>❖ May Represent a Liability to WT</li> </ul> |

# Committee Final Recommendation

Based on all available sites, in town and out of town, the committee recommends that WTPD continue to utilize the Black River, Ghost Lake & Morris County Ranges while continuing to pursue of a better option for a police range.

- ▶ A properly designed and constructed firing range requires detailed planning and significant resources
- ▶ Attempting to build a range without adequate resources has unacceptable risks
- ▶ Until adequate resources are made available, WTPD should continue to make use of out-of-town ranges
- ▶ Investigate strategies to improve scheduling